

# Quick Start Guide

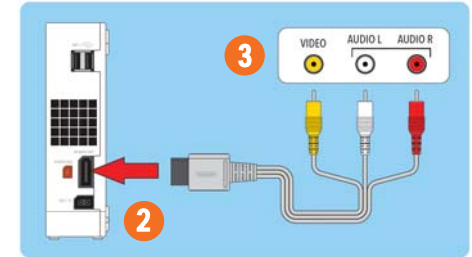
## Nintendo Wii



1 Place Wii horizontally on a flat surface near the video display

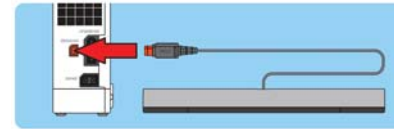


2 Insert AV Multi Out plug on AV Cable into AV Multi Out connector on back of console

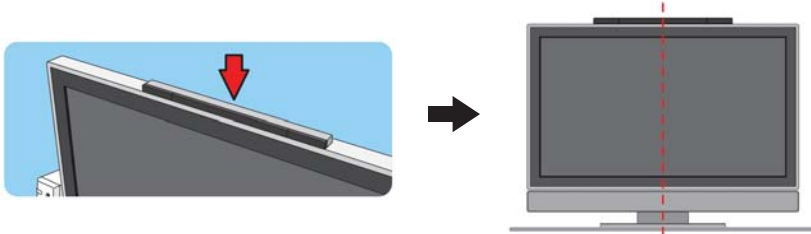


3 Insert RCA plugs on AV Cable into input connectors on TV, VCR or other audio equipment

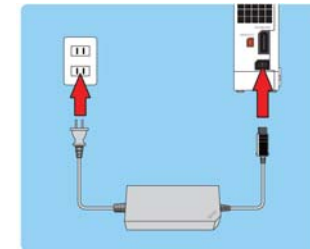
4 Insert Sensor Bar plug into Sensor Bar connector on back of console



5 Place Sensor Bar on top of video display and align it with center of screen



6 Plug power adapter into an electrical output and connect DC Input Cable to back of console



7 Turn ON the power for your TV, the Wii console, and any audio equipment connected to your gameplay setup



8 Select the correct input setting for your TV (often called AV1, line in, Video1, TV1, or something similar)

9 The Wii menu should appear on the TV screen



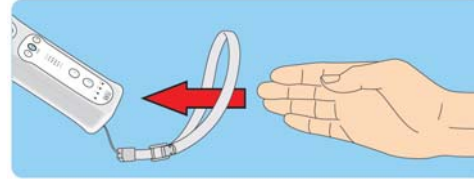
# Quick Start Guide

## Nintendo Wii



### Using the Wii Remote

- Place your hand through the wrist strap and hold the remote firmly
- Use the remote in the following ways to navigate and play games:



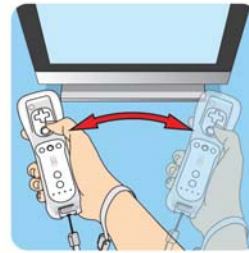
Pointing



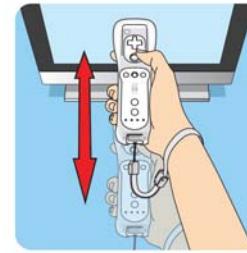
Holding



Dragging



Waving



Pushing/Pulling

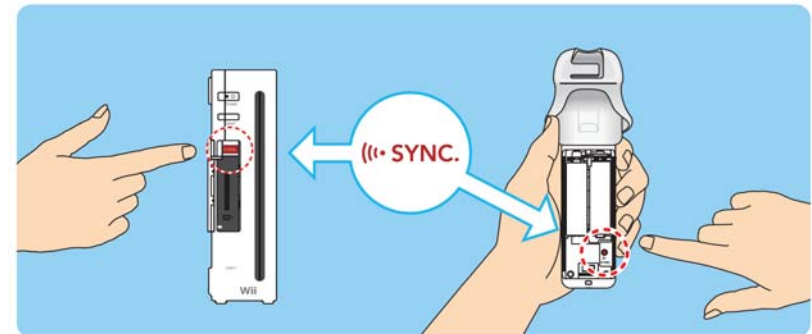


Twisting

### Troubleshooting

*If the console and remote are not synchronized, you can perform the following steps to sync them:*

1. Press the Power button on the Wii console to turn it on.
2. Remove the battery cover on the back of the remote. Press and release the SYNC. button inside the cover. The Player LEDs will blink.
3. Open the SD Card Slot cover on the front of the Wii console. Press and release the SYNC. button on the inside of the compartment
4. When the Player LED blinking stops, connection is complete. The LED that is illuminated indicates the player number.



**If you encounter any problems whatsoever, please call us at 1-877-633-8866. We're more than happy to help!**