

# Quick Start Guide

## Battery Powered PA System



### Initial Setup

- 1 Set up stands by adjusting knobs, separating tripod legs and extending height
- 2 Place speakers on stands, and position speaker units between the audience and the presenter



### Connections & Settings

- 3 Set Bass/Treble to middle and Wireless Volume control to minimum
- 4 Switch POWER button to ON



### Using the Wireless Microphone

#### For Handheld Microphone:

- Turn microphone ON by sliding switch all the way up until **red line** is displayed
- To MUTE microphone, slide switch until **green line** is displayed



#### For Lapel Microphone:

- Clip lapel mic to shirt collar or other piece of clothing near source of audio
- Flip power switch on top of belt-pack transmitter to ON



- 5 Adjust Wireless Volume and Tones levels accordingly
- 6 Please make sure to **switch POWER OFF** when finished using the system



# Quick Start Guide

## Battery Powered PA System



### Troubleshooting

#### ● *If the speakers and microphone do not sync properly:*

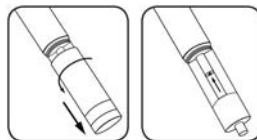
Ensure that the *Wireless 1* knob on back of speakers is set to **1** and the Channel Selector inside the battery compartment of the microphone is also set to **1** (this is the default factory setting). To check the mic setting, simply unscrew the battery case. (For the lapel mic, the Channel Selector is on the side.)



If using multiple wireless microphones, you will need to set the *Wireless 2* knob to **2** on the back of each speaker, and also ensure that the Channel Selector of the second microphone is set to **2**

#### ● *If the microphone fades in and out, or does not turn on, you may need to replace the batteries. To do so:*

- Unscrew the battery cover on bottom of microphone
- Replace old batteries with 2 fresh AA batteries
- Replace battery cover and tighten firmly



*For lapel microphones, open the cover on the belt-pack transmitter, replace the batteries, and slide the cover back into place*

#### ● *If the sound is distorted, you may need to:*

- Lower the volume
- Reposition the speakers to avoid feedback (correct placement is with speakers in front of microphone)
- Replace audio cables (*please call us if this is the case!*)

#### ● *To recharge the speakers, simply connect the AC power cord to the POWER INLET and an electrical outlet*

**If you encounter any problems whatsoever, please call us at 1-877-633-8866. We're more than happy to help!**