

Quick Start Guide

Shure Wireless Microphone



1 Connect antennas to back of receiver and position them at a 45° angle

2 Connect AC adapter to POWER input and plug into an electrical outlet

3 If connecting to a mixer:
Connect XLR cable to MIC OUT on receiver
and XLR audio input on mixer

If connecting to a speaker:
Connect 1/4" cable to LINE OUT on receiver
and audio input on speaker

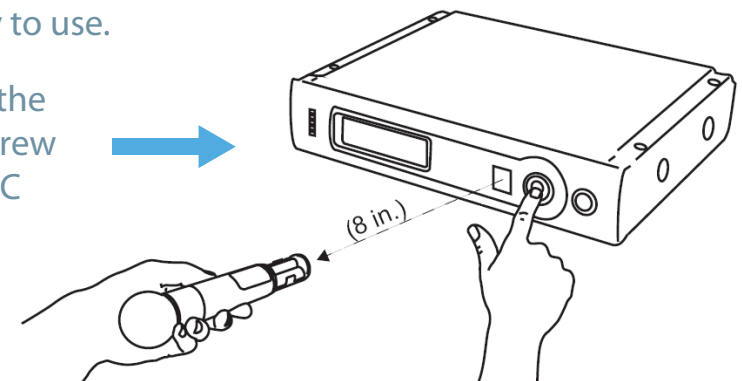
4 Power ON external mixer or speaker and lower the volume

5 Press POWER button on front of receiver to turn it on 

6 Turn on microphone by pressing the POWER ("mute") button

7 The READY light on the receiver should turn **green** when the devices are ready to use.

Note: If the READY light does not turn green, use the SYNC function to set the microphone and receiver to the same frequency. To use this function, unscrew the base of the microphone, point it toward the receiver and press the SYNC button on the unit.



If you encounter any problems whatsoever, please give us a call at 1-877-633-8866. We're more than happy to help!